

Home MultiRoom

SKU: 470144

FEATURES

- Stylish, MultiRoom-exclusive Inside Antenna.
- Powerful, precision-mount Outside Antenna.
- Enhances cell coverage for up to 3 large rooms.
- Tool-free installation. No need to drill holes.

† ⚠ WARNING: This product can expose you to chemicals including Nickel, which is known to the State of California to cause cancer, and Bisphenol A, which is known to the State of California to cause birth defects or other reproductive harm. For more information go to www.P65Warnings.ca.gov

About

The weBoost **Home MultiRoom** cell signal booster boosts networks speeds across all available signal bands (including Band 25 for enhanced Sprint support) for up to three large rooms.

The Home MultiRoom also features an exclusive, Inside Antenna—featuring a built-in kickstand and stylish fabric cover while also providing best-in-class performance. Wall-mount installation is effortless with the included 3M® Command™ strips. The proprietary Outside Antenna offers a tool-free, finger-tightened precision mount. Users will experience faster data speeds, better voice quality, fewer dropped calls, and superior streaming capability. Home MultiRoom works with all US carriers—including Verizon, AT&T, T-Mobile, Sprint, and more.

It also comes with 2-year manufacturer’s warranty, and 30-day money-back guarantee.

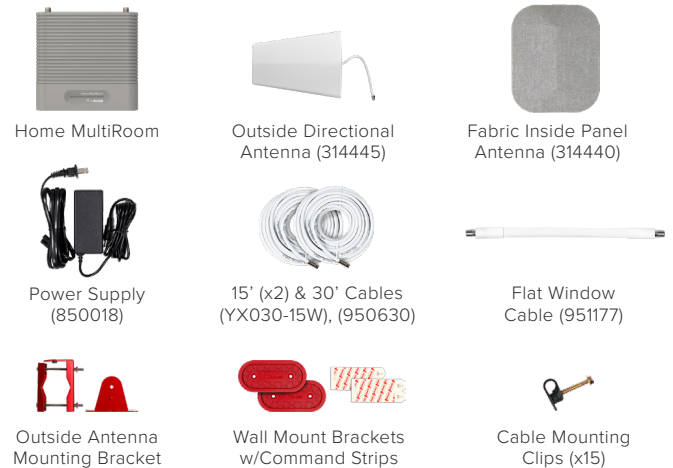
Coverage Area

IF YOUR OUTSIDE SIGNAL IS	YOUR BOOSTED SIGNAL MAY BE
●●●● -89 AND LOWER About 5 bars	UP TO 5,000 sq. ft.
●●●● -90 dB About 3 to 4 bars	UP TO 3,500 sq. ft.
●●○○○ -100 dB About 1 to 2 bars	UP TO 1,000 sq. ft.
○○○○○ No existing	A signal booster likely will not work



- BOOSTS SIGNAL ON ALL AVAILABLE NETWORK SPEEDS
- UP TO 5,000 sq. ft. COVERAGE
- UP TO +65 dB GAIN
- MULTI-USER WIRELESS BOOSTER

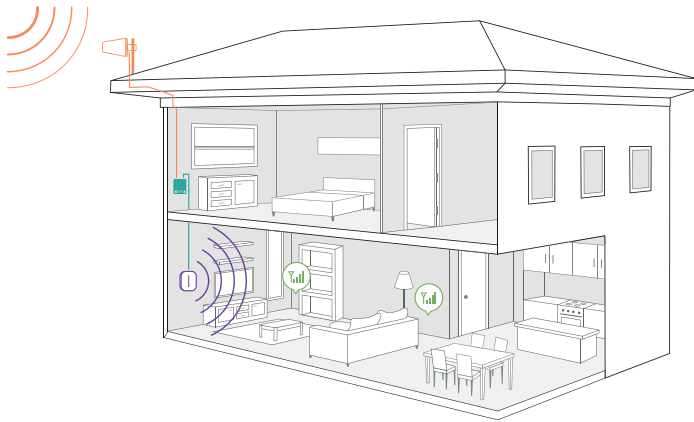
Kit Includes



Specifications

MODEL NUMBER	470144†	
FREQUENCIES	Band 12/17	700 MHz
	Band 13	700 MHz
	Band 5	850 MHz
	Band 4	1700/2100 MHz
	Band 25/2	1900 MHz
MAX GAIN	65 dB	
IMPEDANCE	75 Ohm	
POWER	110-240 V AC, 50-60 Hz, 8 W	
CONNECTORS	F-Female	
BOOSTER DIMENSIONS	6 x 6 x 1.6 in.	
BOOSTER WEIGHT	1.9 lbs.	

Installation



- 1 Receives signal:** The outside antenna reaches out to access the existing strong outdoor cell signal and delivers it into the booster.
- 2 Boost signal:** The booster receives the signal, amplifies it, and serves as a relay between your phone and the nearest cell tower.
- 3 Broadcasts signal:** Your devices get a stronger signal, and calls and data are fed through the booster back to the network.

Available Accessories



Plastic Inside Panel Antenna
314444



Lightning Surge Protector 75 Ohm
859992*



-3dB 2-Way Splitter 75 Ohm
850034*



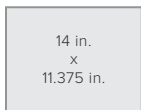
20 ft. White RG6 Low Loss Coax
950620*



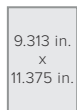
F-Female to F-Female Barrel Connector
971129*

Package Dimensions

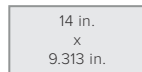
9.313 L x 14 W x 11.375 H



FRONT



SIDE



TOP/BOTTOM



WEIGHT

MASTER CARTON: 25.5 L x 19.5 W x 15.5 H | 43.8 lbs. | QTY 4

Support



2-Year Warranty from Purchase.

Website: <http://support.weboost.com>

Phone: +1 866 294 1660
Monday to Saturday

ASSEMBLED IN THE USA



*⚠️ **WARNING:** Cancer and Reproductive Harm - www.P65Warnings.ca.gov.

UPC



Contact us today!

(800) 288-4505
info@aircomm.com
www.aircomm.com